

WORKS WITH

All Apple iPhones 4S or newer & iPads Generation 3 or newer operating on iOS 7.0 or newer.

All Bluetooth Smart compatible Android phones & tablets with operating system 4.3 (Jelly Bean) or newer.

For a list of compatible Android phones please visit aabsmart.com/checkmyphone

SPECIFICATIONS

SPM-100

Weight .1 lbs

Dimensions 2.5" x 5.2" x 0.76" WHD

SPM-K1

Weight 1.2 lbs

Dimensions 4.0"x6.5"x2.0" WHD

WARRANTY

The SPM-100 comes with a one year warranty from the time of purchase. If you have a faulty unit, or need help troubleshooting an issue please contact AAB support for a warranty replacement. support@AABsmart.com

WHERE TO PURCHASE

This product is available at local HVAC wholesale distributors. For a list of local distributors please visit www.AABsmart.com.



SPM-100 & SPM-K1

The SPM-100 Smartphone Static Pressure Meter is a powerful and accurate dual port manometer that fits in your pocket. The SPM-100 performs all of the functions of traditional handheld dual port manometers plus a many more features and advantages by harnessing the power of smartphone processors. The meter also includes a complimentary app that provides onscreen guidance to assist the user in taking complex measurements.



SPM-K1 kit combines the SPM-100 and the PRB-KIT probe kit into one convenient package and includes a brass gas fitting. The SPM-100 connects seamlessly and immediately to smartphones and tablets utilizing Bluetooth Smart technology.

The SPM-100 walks the user through several tests with onscreen guidance including:

- Static Pressure
- Pressure Differential
- Indoor vs. Outdoor Pressure
- System External Static Pressure
- Gas Pressure Test

Features

- Free app that connects the meter to your smartphone
- Onscreen guidance that makes it easy to take accurate readings
- Ruggedized housing with magnetic back for handsfree operation
- Emails professional detailed reports from within the app to enhance professionalism and validate work performed

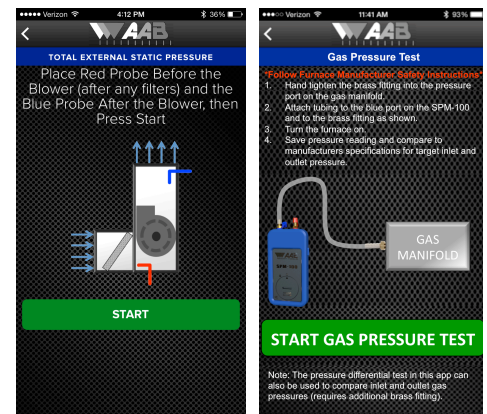
Technical Data

Operational temperature range: -40°F to +185°F (-40°C to +85°C)
 Operational temperature range full accuracy: -32°F to +149°F (0°C to +65°C)
 Power: Panasonic 3.6V, CR 2450 Coin Cell Lithium Battery
 Battery Life: >500 hours
 Auto power off 30 seconds after closing or minimizing app or no connection
 Units of Measure: inWC, inHg, psi, mmWC, mmHg, Pa, kPa, mBar
 Resolution: 0.004 inWC
 Pressure range: ±75 inWC
 Dual Ports for rubber tubing 1/8" ID
 Absolute Accuracy 0 to 65°C (32 to 149°F): typical .4 inWC



Designed for use with APPLE® products. APPLE® is a registered trademark in the United States and other countries.

Designed for use with Android® products. Android® is a registered trademark in the United States and other countries.



SPM-K1 Kit Contains: SPM-100 Meter (on top), Two Color Coded Magnetic Probes, Two 6' Sections of Latex Tubing, Brass Gas Fitting